



616,0°

er Spielplatz

A

617,0

Passerplatz Süd

616.4

617.55

Spielgrün

618,0

Kiebbühlstrasse

617.75

Sichtgrün

619,0



Brunnen

620,0

PW 10 Sdk

PW 10 Sdk

PW 10 Sdk

620,0

619.7

616.4

619.7

621,0

Velo 130 Sdk geolockt

PW 9 Sdk, max Situation 1:500

622,0

623,0

624,0

625,0

B

A

619.7

619.7

616.4

617.0

618,0

619,0

619.7

620,0

621,0

622,0

623,0

624,0

625,0

Vorhalle 468

Foyer Ebene 1

Gang Lehrer 21

Klasse 60

Klasse 77

Klasse 90

Klasse 90

Klasse 90

Klasse 90

Klasse 90

Klasse 90

Klasse 90

Klasse 90

Klasse 90

Klasse 90

Klasse 90

Klasse 90

Klasse 90

Klasse 90

Klasse 90

Klasse 90

Klasse 90

Klasse 90

Klasse 90

Klasse 90

Klasse 90

Klasse 90

Klasse 90

Velo 130 Sdk geolockt

D 14

H 11 C

Lager 15

Office 10

Konferenz 05

Mehrschicht 224

Foyer E1 225

WF 10

WF 10

WF 10

WF 10

WF 10

WF 10

WF 10

WF 10

WF 10

WF 10

WF 10

WF 10

WF 10

WF 10

WF 10

WF 10

WF 10

WF 10

Halle I 457

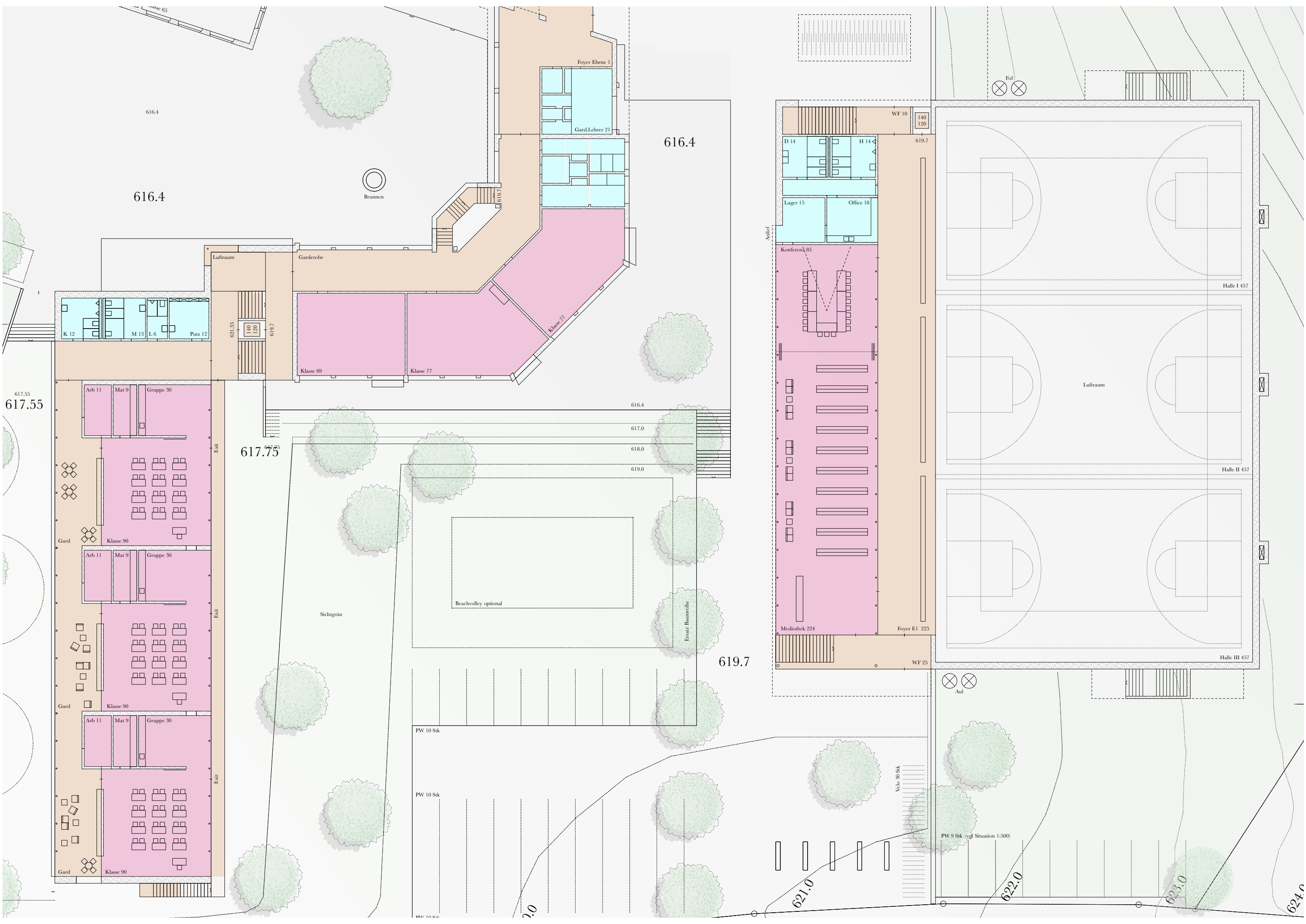
Halle II 457

Halle III 457

Nr 12

Nr 12a

Nr 10



616.4

616.4

617.55

617.75

616.4

617.0

618.0

619.0

619.7

PW 10 Stk

PW 10 Stk

PW 10 Stk

Velo 30 Stk

PW 9 Stk (vgl Situation 1:500)

621.0

622.0

623.0

624.0

616.4

Brunnen

Foyer Ebene 1

Gard.Lehrer 21

Klasse 77

Klasse 69

Klasse 77

Arb 11

Mat 9

Gruppe 30

Arb 11

Mat 9

Gruppe 30

Arb 11

Mat 9

Gruppe 30

Arb 11

Mat 9

Gruppe 30

Luftraum

Garderobe

K 12

M 13

L 6

Putz 12

140

120

WF 10

140

120

D 14

H 14

Lager 15

Office 18

Konferenz 85

Mediothek 224

Foyer E1 225

WF 25

Halle I 457

Halle II 457

Halle III 457

Luftraum

Sichgrün

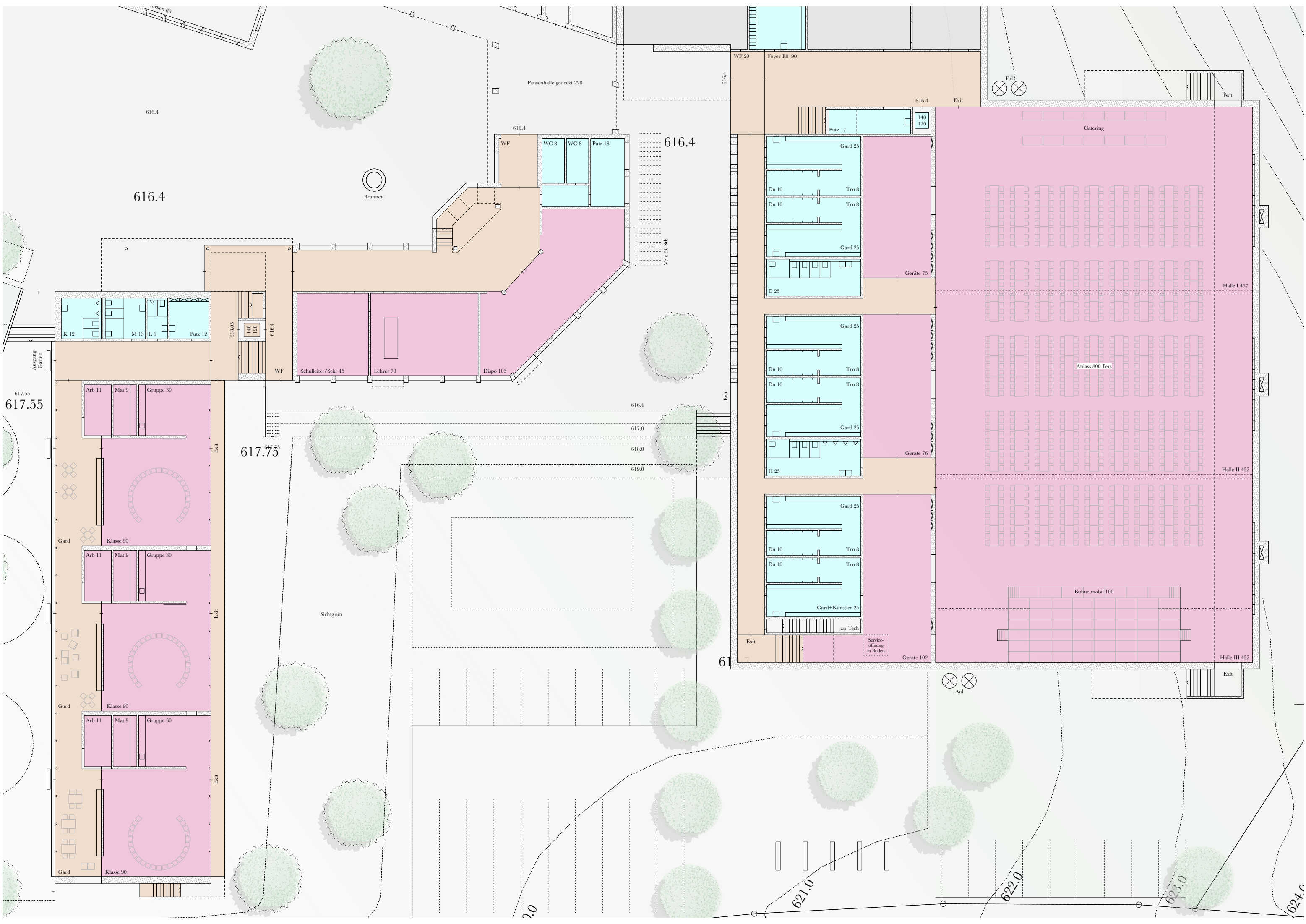
Beachvolley optional

Ersatz Baumreihe

Aul

Fot





617.55

616.4

616.4

617.75

616.4

617.0

618.0

619.0

61

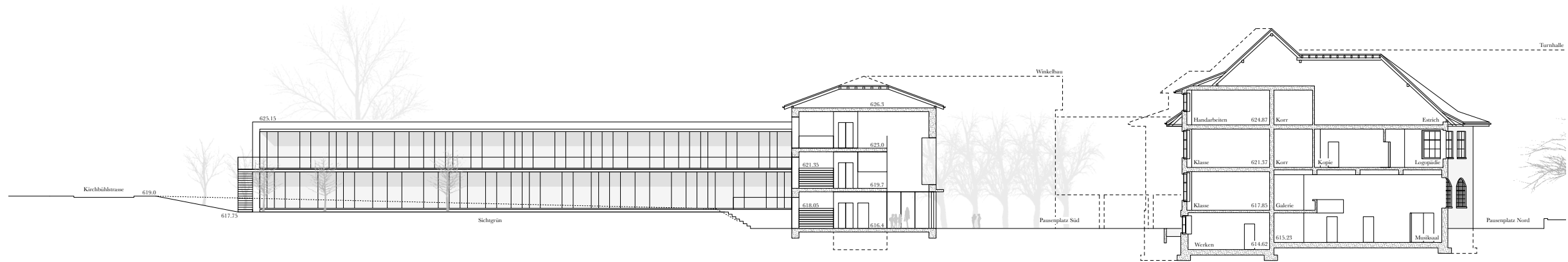
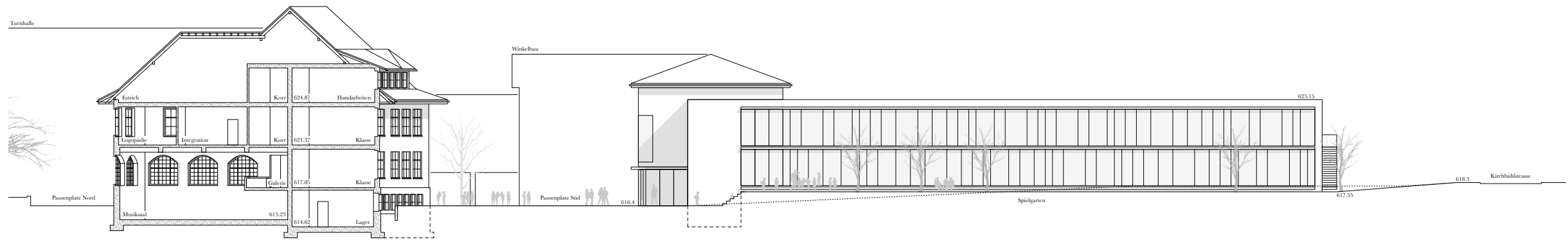
Aul

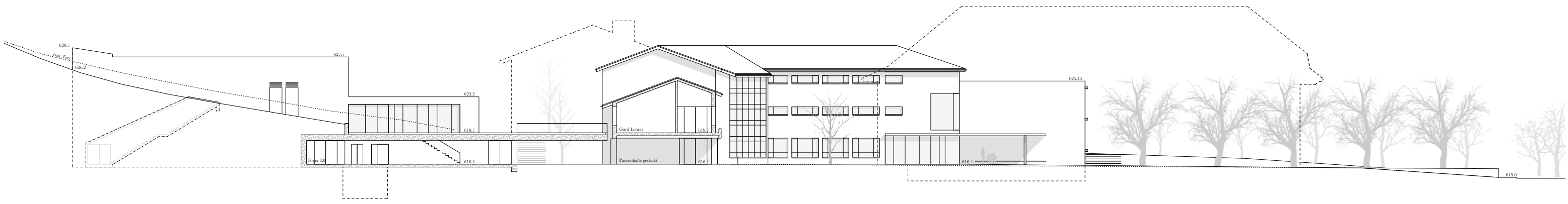
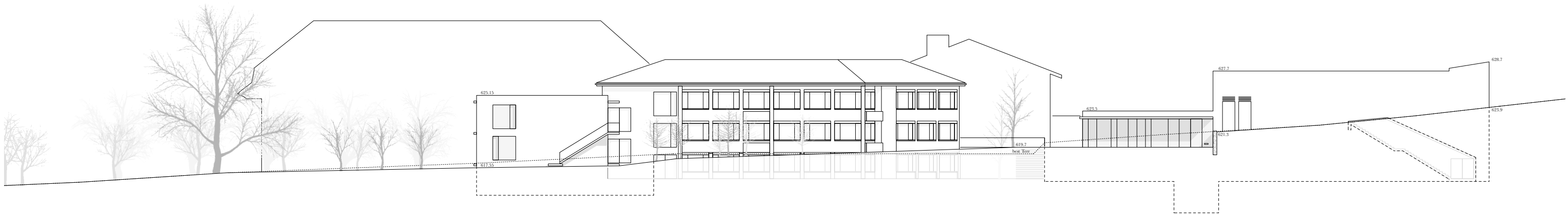
621.0

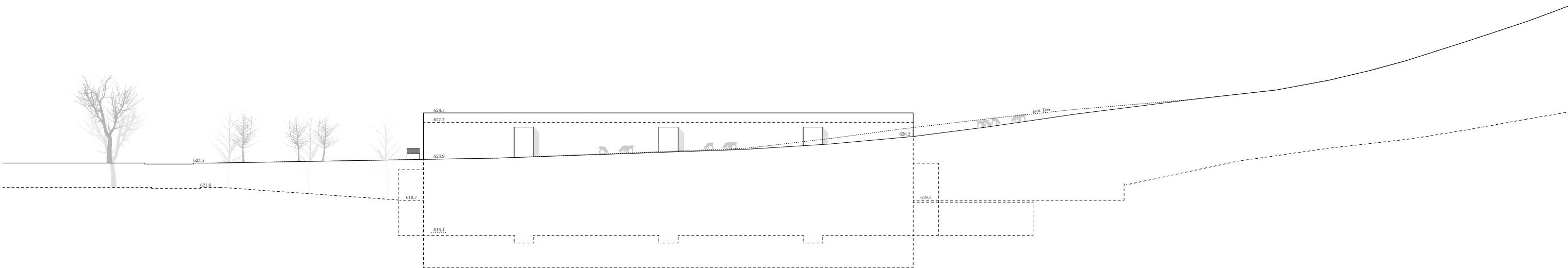
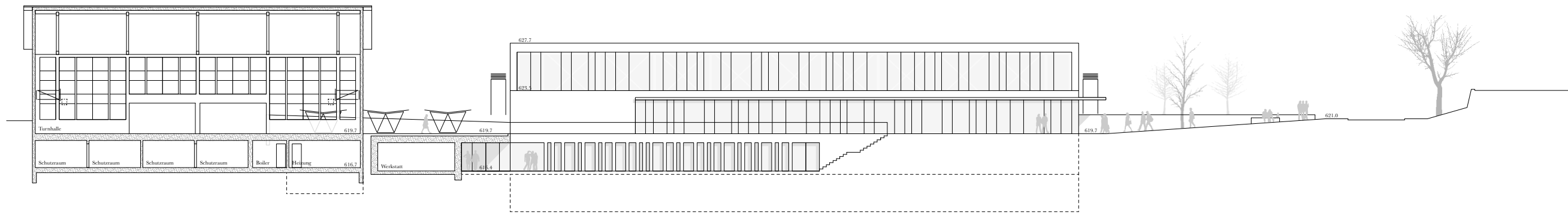
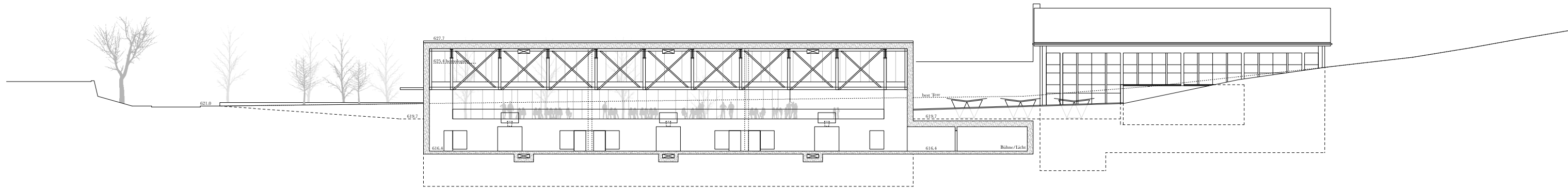
622.0

623.0

624.0







Dachaufbau:
 Substrat 100mm
 Schutzvlies
 Dachhaut
 Gefällsdämmung ø 400mm
 Bauzeitabdichtung
 Beton 250mm
 Holzwoll-Akustikplatte 75mm

